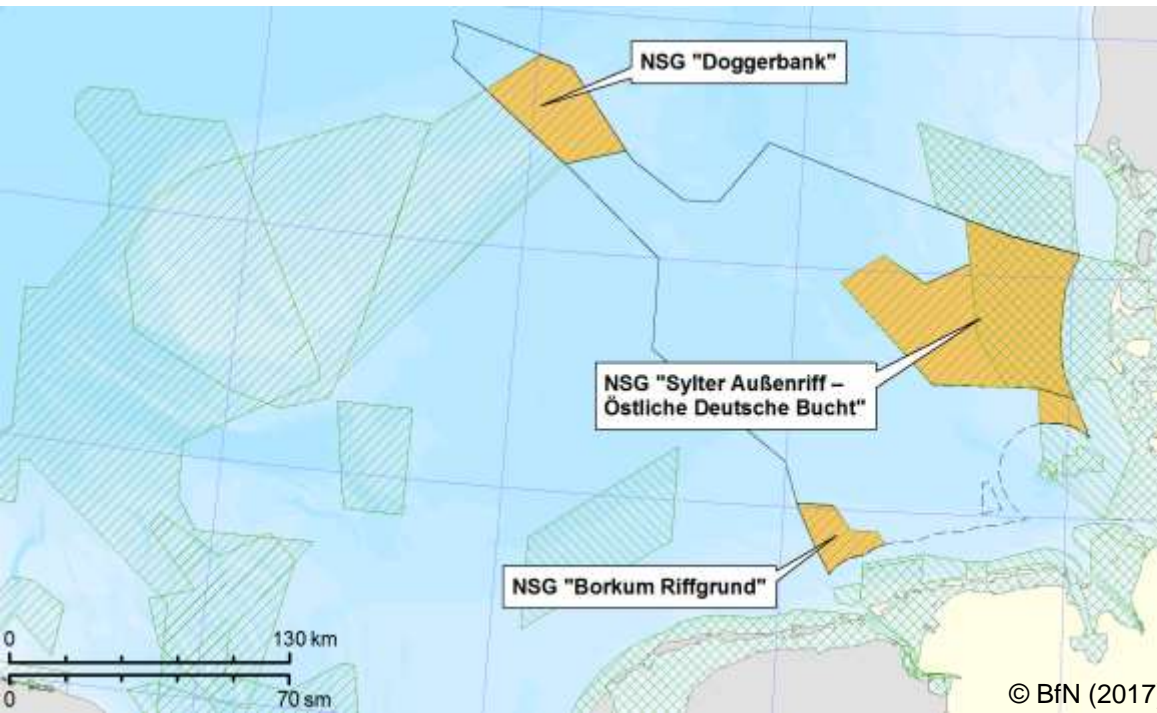


Announcement

- Management plans for Natura 2000 sites in the German EEZ of the North Sea have been published
- Including two MSP measures:
 - M 1.1 & M 3.5: Consideration of the MPA and its connectivity when updating the maritime spatial plan



Borkum Reef Ground:

<https://www.bundesanzeiger.de/pub/publication/OPI7BnCTNrxHO2yyURp/content/200411001713M001/BAanzAT13052020B900.pdf>

Dogger Bank:

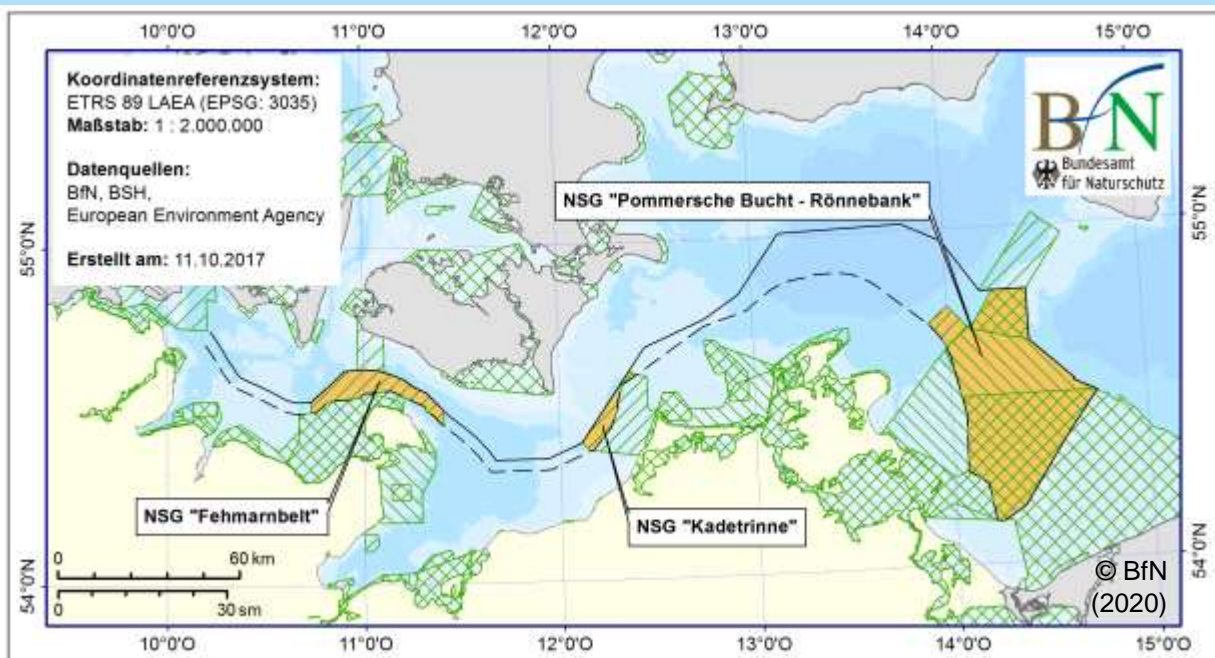
<https://www.bundesanzeiger.de/pub/publication/acdrTrxusG1YN5e9L37/content/200411001716M001/BAanzAT13052020B1000.pdf>

Sylt Outer Reef – Eastern German Bight:

<https://www.bundesanzeiger.de/pub/publication/h0d1RV6aENhZ85BfVb3/content/200411001798M001/BAanzAT13052020B1100.pdf>

Announcement

- Management plans for Natura 2000 sites in the German EEZ of the North Sea have been published
- Including two MSP measures:
 - M 1.1 & M 3.5: Consideration of the MPA and its connectivity when updating the maritime spatial plan



- Management plans for Natura 2000 sites in the German EEZ of the Baltic Sea under consultation

Spatial protection measures under the MSFD: more than just Natura 2000

-A chance for MSP-

**Maike Kramer,
Jochen Krause, Axel Kreutle, Matthias Steitz**
kramer@bioconsult.de

Acknowledgements

- This presentation is based on ideas initially developed together with **Daniel Braun** and **Leila Gaigl** (both formerly University of Rostock).
- I got valuable input in discussion with members of HELCOM-VASAB MSP WG and HELCOM STATE & CONSERVATION, in particular **Dieter Boedeker** (BfN).
- The ideas presented were developed during projects financed by BfN:
 - Cluster 2 MSFD (1011–2014)
 - Cluster 1 / AWZ-P1 Management Plans (since 2011)

Purpose of this presentation

- Spatial protection measures under the MSFD
 - What are spatial protection measures
 - MSFD requirements...
 - ...going beyond Natura 2000
 - **A chance for MSP!**

- Impulse for discussion:
 - Can MSP fill the gap between MSFD requirements and Natura 2000 achievements?
 - How can this be done?

What are spatial protection measures?

- MSFD aims at Good Environmental Status (GES)
- GES achieved & maintained through measures
- Spatial protection measures (SPM) explicitly required

Art. 13(4) MSFD:

- “Programmes of measures [...] shall include *spatial protection measures*,
- *contributing to coherent and representative networks of MPAs [...]*,
- *such as [Natura 2000 sites]*,
- and MPAs as agreed [...] in the framework of international or regional agreements [...].”

- **Natura 2000 sites** and other MPAs named as **examples**

What are spatial protection measures?

- MSFD aims at Good Environmental Status (GES)
- GES achieved & maintained through measures
- Spatial protection measures explicitly required
 - **Natura 2000 sites** and other MPAs named as **examples**
 - Also **MSP** is viewed as **example** by the EU-COM

EU-COM Decision 2010/477/EU:

“[Tools that can support an ecosystem-based approach to the management required to achieve GES] include *spatial protection measures* and [...] spatial and temporal distribution controls, *such as [MSP].*”

What are spatial protection measures?

- MSFD aims at Good Environmental Status (GES)
- GES achieved & maintained through measures
- Spatial protection measures explicitly required
 - **Natura 2000 sites** and other MPAs named as **examples**
 - Also **MSP** is viewed as **example** by the EU-COM
 - Common misunderstanding:

MSFD requirements

MSFD Spatial Protection Measures = Natura 2000 Network

- What are the MSFD requirements for SPM?
- In how far do they go beyond Natura 2000?

MSFD requirements for SPM

Specific requirements for SPM &
general requirements for programmes of measures, e.g.

- Ecological coherence and representativity – Art. 13(4)
- Orientation towards GES achievement – Art. 13(1)
- Regional coordination of measures – Art. 6(2)
- Compliance with overarching principles:
 - Ecosystem-based approach (EBA) – Art. 1(3)
 - Sustainability – Art. 1(3), 13(3)
 - Precautionary principle & preventive action – Preamble (27, 44)
 - Polluter-pays principle – Preamble (27)

MSFD requirements beyond Natura 2000

Requirements	Implications (in red: not fulfilled by Natura 2000)
Representativity	<p>Adequate coverage of diversity of ecosystems according to characteristics listed in Annex III, including</p> <ul style="list-style-type: none"> • Broad habitats, • Other habitats (habitats directive, international conventions), • Habitats in areas with intense pressures, • Biological features of all compartments of species. <p>Protection of these characteristics by measures.</p>
Coherence	<p>Sufficient coverage (size, distance, placement) & measures inside MPAs.</p> <p>Securing migration corridors & stepping stones also by measures outside MPAs.</p>
GES achievement & Ecosystem-based approach	<p>Measures aiming at GES for entire sea area: corresponding measures inside and outside MPAs.</p> <p>Effective reduction of pressures.</p> <p>Enhancement of resilience: protection of ecosystem processes.</p> <p>Securing ecosystem services.</p>
Regional coordination	<p>Accounting for OSPAR and HELCOM Recommendations, e.g. protection of regionally red-listed species and habitats.</p>

Summary

- MSFD „spatial protection measures“ are not a synonym for the Natura 2000 network.
- MSFD requirements for spatial protection measures go beyond the possibilities of Natura 2000. These include
 - Protecting red-listed species and habitats
 - Protecting broad habitats & habitats in areas with intense pressures
 - Securing migration corridors and stepping stones
 - Measures also outside MPAs, corresponding to measures inside MPAs
- Additional spatial protection measures are necessary for MSFD compliance.

Questions for the discussion

Can MSP fill the gap between MSFD requirements and Natura 2000 achievements – and how?

- Are priority areas for conservation suitable to protect additional features? Which ones? By what means?
 - Red-listed species and habitats
 - Broad habitats & habitats in areas with intense pressures
- Can migration corridors and stepping stones be secured by priority areas? What does this require?
- Can priority areas for certain activities, along with priority areas for conservation outside MPAs, be seen as, or help to implement, measures outside MPAs?
- How effectively can MSP reduce pressures?
- How can the ecosystem-based approach be implemented?